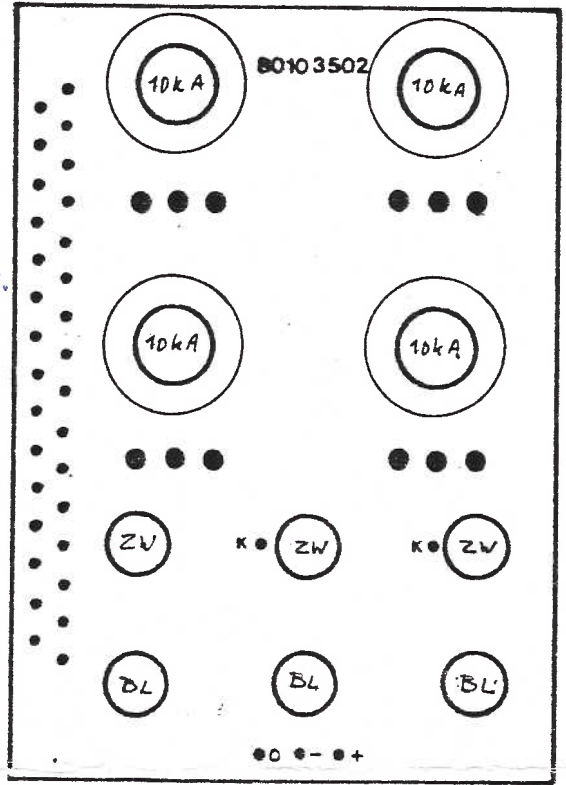
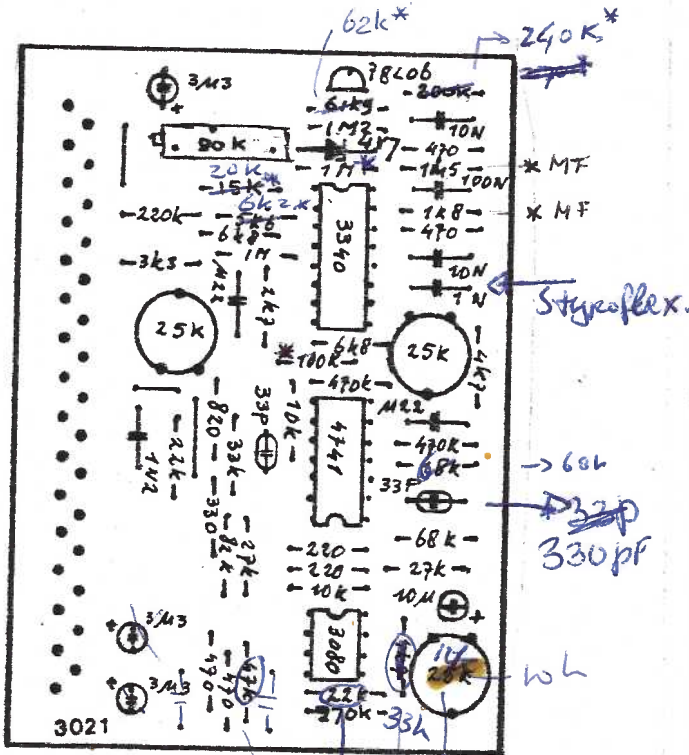
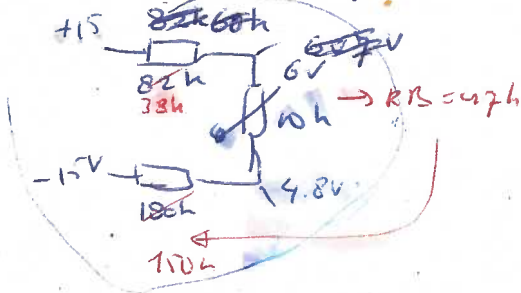
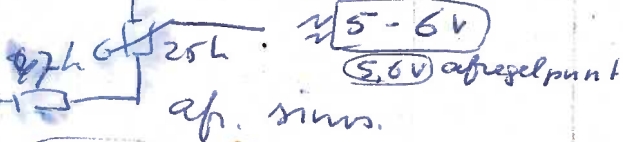


3021

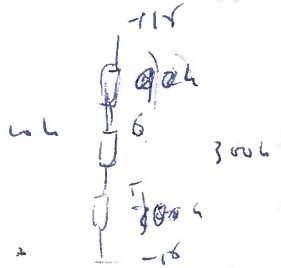
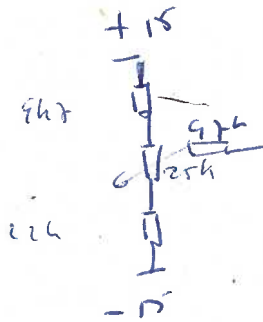


Regelbereich verkleinern

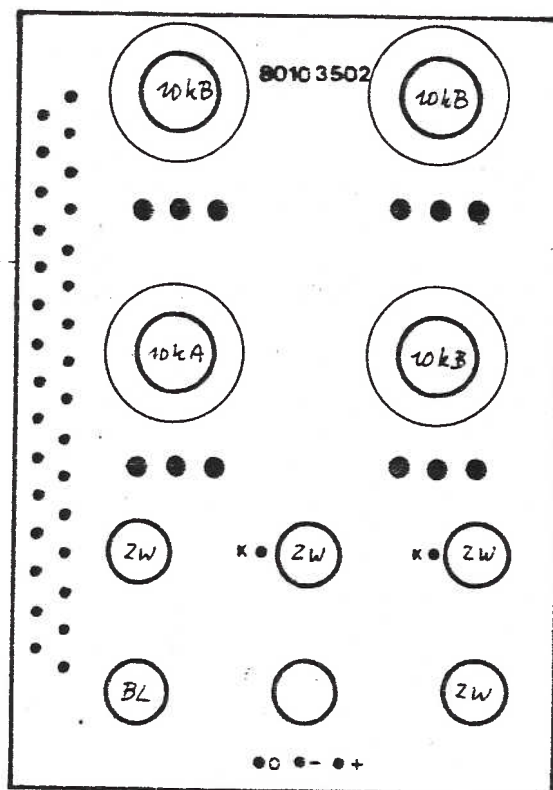
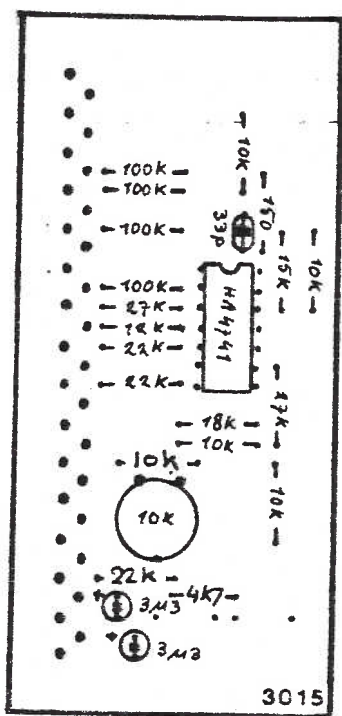
a) zie ev. curtis:



sinus weerstand $\leftarrow 18k \rightarrow 68k$ in-offzet



wh x



afregelen.

offset meten bij richte output ref.

by aanbieden van gelijkspanning (5V) (extern ingang)

het verschil tussen deze ingang en de uitgang afregelen

tot dat geen offset bereikt is.

